

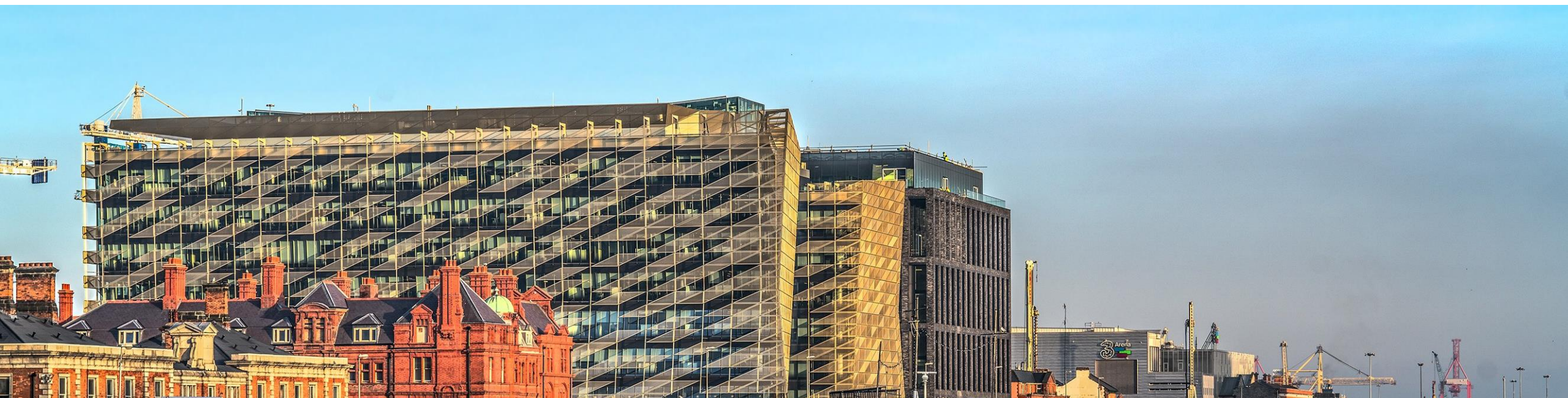


קבוצת סקופ מתכות



המניע
משאבות
HAMENIA PUMPS

wilo



Reference Collection

Overview Global References



LAKHTA CENTRE



FACTS

Country: Russia

City: St. Petersburg

Segment: Building Services

Applications: HVAC, Water supply

Products: Wilo-CronoLine-IL-E, Wilo-Helix VE, Wilo-Stratos-D

UP-HIGH - GREEN PUMPS IN EUROPE'S TALLEST BUILDING

With a height of 462 metres, the Lakhta Centre is the tallest building in Europe and the 13th tallest building in the world. It broke ground in 2012, the exterior was completed six years later. The “northernmost skyscraper in the world” will also serve as the headquarters of Russian gas giant Gazprom, which carried out the construction. Capturing the changes in daylight, the main tower’s unique silhouette symbolizes a flame, a distinctive feature of Gazprom’s logo. With a total floor area of over 400,000 m², Lakhta Centre comprises four different facilities.



FEDERATION TOWER



HIGH-EFFICIENCY FOR THE HEART OF MOSCOW'S BUSINESS CENTRE

The monumental complex consists of two towers with different sizes: the more than 370-meter tower with almost 100 floors is called "Vostok" (East-Tower), Orient, whereas the smaller one with over 60 floors and a height of 243 meters is called "Zapad" (West-Tower), Occident. Beneath the surface, the glass giants share a ten-story foundation. Products and solutions provided by Wilo Russia, ensure efficient and reliable heating, air conditioning and cooling at the same time.

FACTS

Country: Russia

City: Moscow

Segment: Building Services

Applications: HVAC

Products: Wilo-Stratos, Wilo-CronoLine-IL, Wilo-VeroLine-IP-E, Wilo-CronoLine-IL-E, Wilo-TOP-S, Wilo-VeroNorm NPG, Wilo-EMU FA, Wilo-EMU KS, Wilo-TOP-Z, Wilo-Multivert MVI, Wilo-CronoNorm-NL, Wilo-Star-RS



CENTRAL BANK



FACTS

Country: Ireland

City: Dublin

Segment: Building Services
Commercial

Applications: HVAC

Products: Wilo-Stratos
GIGA, Wilo-SiBoost Smart
Helix VE, Wilo-Drain TP65

GREEN BUILDING APPROACH

Green Wilo pumps contribute to the overall efficiency of the new headquarters - from heating and cooling to cold water supply and products for rainwater harvesting. Central Bank campus is a green building, certified by BREEAM, the world's leading sustainability assessment method. The bank itself had set a number of objectives when it came to the sustainability of the building – one of our main requirements was to only provide high-efficient pumps with efficiency class IE4 to ensure compliance with BREEAM criteria. Central Bank set a number of objectives for the design of the building: e.g. to ensure the environmental sustainability.



HONGQIAO AIRPORT



WORLD-CLASS TRANSPORT HUB

Hongqiao Airport, the 4th busiest airport in China, is located in the west of Shanghai. With its 15 waiting halls, 18 VIP waiting halls and 15 luggage transmission systems, the main hub for domestic activity treats more than 8 million passengers every year. In Terminal T1, Wilo takes care of professional maintenance and energy saving solutions as full package for the reliable operation. This is the first collaboration with Wilo – undergoing the renovation of the air conditioning system, water supply system and fire fighting system of the whole Terminal 1. It's also the pilot project of WiloCare.

FACTS

Country: China

City: Shanghai

Segment: Building Services
Commercial

Applications: HVAC

Products: Wilo-CronoNorm-NL, Wilo-Comfort COR-Helix VE, Wilo-SCP, Wilo-Multivert MVI, Wilo-NLB



DUBAI OPERA



A LANDMARK PROJECT

The Dubai Opera on Sheikh Mohammed Bin Rashid Boulevard is unquestionably the cultural centre of Dubai. The concert hall can seat up to 2,000 people. The Dubai Opera is one of the cultural and architectural landmarks of Dubai, if not the entire Arabian Peninsula. The fact that Wilo was selected to be a part of this prestigious construction project is a particular success, and not only in terms of technology and business: As a supplier for the Dubai Opera, Wilo made extensive and close contacts that extend far beyond this project.

FACTS

Country: United Arab Emirates

City: Dubai

Segment: Building Services Commercial

Applications: HVAC

Products: Wilo-Helix V, Wilo-Multivert MVI



FACTS

Country: Egypt

City: Galala

Segment: Water Management

Applications: Water supply, irrigation

Products: Wilo-SCP, Wilo-EMU KS

OPERATING UNDER HIGHEST REQUIREMENTS

The new City of Galala is located on the highest mount plateau in the Red Sea area between Ain Sokhna and Zafarana. The plateau sits over 650 meters above sea level at its highest elevation. The city is one of the government's national efforts to develop the vast and empty eastern desert to solve Cairo's population congestion and create work and living opportunities for the youth in addition to generating investment opportunities. The new city centers on a balanced approach towards development and preservation of the surrounding pristine environment.



MESSE FRANKFURT



FACTS

Country: Germany

City: Frankfurt

Segment: Building Services
Commercial

Applications: Water supply,
HVAC

Products: Wilo-Stratos
GIGA, Wilo-RexaLift FIT L

ECO-FRIENDLY PUMPS HELP CREATE AN ARCHITECTURAL HIGHLIGHT

„Messe“ Frankfurt is using highly efficient Wilo products for modern heating, air-conditioning and cooling technology in hall 12. Over 70 Wilo pumps are in use on the Frankfurt trade fair site. The tried and tested Wilo-Stratos and Wilo-Stratos GIGA high-efficiency pumps ensure optimum heating. Submersible pumps and lifting units regulate sanitation in the hall. The Wilo-RexaLift FIT L sewage lifting unit is easy and flexible to install with a choice of inlets. It guarantees reliable operation thanks to trustworthy filling level monitoring and integrated thermal motor protection.

BUILDING SERVICES



MARRIOTT HOTEL MINSK



HIGHEFFICIENCY AND OPERATIONAL RELIABILITY

Hotel "Marriot", where luxury and comfortable climatic conditions are priority for the most demanding guests, is one of Wilo's pride in Minsk. To apply with high requirements for a comfortable microclimate in the hotel rooms, conference rooms of the business center, fitness and spa salons the boiler room is equipped with Wilo monobloc pumps with integrated frequency converters. High-efficiency pumps Wilo with EC motor and electronic power adjustment provide automatic recharge of technological systems of the complex.

FACTS

Country: Belarus

City: Minsk

Segment: Building Services
Commercial

Applications: HVAC

Products: Wilo-Stratos-
Giga, Wilo-BL-E



GUANGZHOU BAIYUN INTERNATIONAL AIRPORT



FACTS

Country: China
City: Guangzhou
Segment: Building Services
 Commercial
Applications: HVAC
Products: Wilo-SCP,
 Wilo-CronoNorm-NL

EXPANDING EFFICIENCY

The expansion project of Terminal 2 of Guangzhou Baiyun International Airport started in February 2013 and was officially put into use in April 2018. After completion, it will meet the annual demand for 80 million passengers, 2.5 million tons of cargo and mail throughput, and 620,000 aircraft movements. A total of 80 WILO SCP horizontal double suction pumps and 19 WILO NL horizontal end suction pumps have been installed in the T2 terminal of Guangzhou Baiyun Airport. The maximum power is up to 160KW and 37KW respectively. The refrigeration system provides a strong guarantee to the 880,700 m² of terminal building.



OLYMPIC STADIUM CENTRE



HIGH-EFFICIENT TRAINING BASE

The national Olympic sports center, located on the north fourth ring road of Beijing, was established in 1986 for the 1990 Asian Games. It is not only a training base for national sports athletes, but also an important place for holding large-scale sports events, as well as for entertainment. The whole complex contains an indoor arena, the main stadium, a hockey field as well as a natatorium. The stadium has a floor space of 34,975 m². For the 2008 Summer Olympics, it had undergone a major renovation. Over the years, efficiency has also been improved within the building.

FACTS

Country: China

City: Beijing

Segment: Building Services
Commercial

Applications: HVAC

Products: Wilo-CronoLine-IL, Wilo-Multivert MVI, Wilo-SCP, Wilo-CronoNorm-NL



NORTHERN LIGHTS



PARTNERS FOR LIFE

The Northern Lights residential complex, a bold unique project embodied in the Hi-tech style, received an award from the International Association of Architects Union 2017. Three towers of an unusual shape on the 33rd, 37th and 42nd floors are similar to the glimpses of the northern lights embodied in reality and are one of the most beautiful projects of the capital of Kazakhstan. The residential complex was designed with the intention that its inhabitants would be warm and comfortable 24 hours a day during the harsh Astana winters.

FACTS

Country: Kazakhstan

City: Nur-Sultan

Segment: Building Services
Commercial

Applications: Water supply

Products: Wilo-CronoLine-IL, Wilo-CronoBloc BL, Wilo-CronoNorm-NL, Wilo-Helix VE



FACTS

Country: Korea

City: Goyang

Segment: Building Services
Commercial

Applications: Water supply,
Drainage & Sewage

Products: Wilo-CronoLine-
IL, Wilo-Multivert MVI,
Wilo-HiBoost, PMT, PD, PDV



TAILOR-MADE SOLUTIONS

Starfield Goyang is a mega complex shopping theme park located in Goyang-si - near Seoul, capital of Korea. It is the nations largest shopping complex with various malls, restaurants, hypermarkets, sports and entertainment complexes. The building required tailor-made heating, ventilation and air-conditioning solutions as well as experts with deep insights into HVAC systems. Moreover, it demanded overall pumps and pump system solutions in various applications and uses for shopping malls as well as sports facilities including a swimming pool.



VARYAP MERIDIAN



MIXED ECOLOGICAL PROJECT

Within the scope of the Varyap Meridian project, there are 5 towers of 20 to 60 floors containing a total of 1,500 residences, a business center with 50,000 m² rental space, a 20,000 m² office building, a 5-star hotel to be given to an international brand and commercial areas. Varyap Meridian has been built with an understanding of holistic sustainability, which is the most accepted approach in recent years in the international real estate development sector and requires design and implementation in harmony with the natural environment. Innovative technologies and the opportunities provided by LEED criteria are returned to the landlords as lower dues and overheads.

FACTS

Country: Turkey

City: Istanbul

Segment: Building Services
Commercial

Applications: HVAC, Water supply

Products: Wilo-CronoLine-IL, Wilo-VeroLine-IPL, Wilo-Stratos, Wilo-TOP-Z, Wilo-Multivert MVI, Wilo-Comfort COR-MVI, Wilo-DrainLift, Wilo-RexaLift



FACTS

Country: UK

City: Isle of Man

Segment: Building Services
Commercial

Applications: HVAC

Products: Wilo-CronoTwin-DL-E, Wilo-CronoBloc BL

**£11,000 SAVINGS
PER ANNUM**

Wilo high efficiency pumps are helping a leading Building Services Engineer achieve his ambition of reducing a Government's energy bill by 5%, year on year, through the sharing of the company's energy solutions expertise. The Wilo DL-E models have been installed in the various Sub-heat stations around the site. Each Sub-heat station has a pump for Constant Temperature and one for Variable Temperature requirements. Already the Pathology department, the theatres, Intensive Care Unit, Accident and Emergency and Fractures clinic and the Estates and Kitchens areas have been switched to new pumps.